



WALE'S

WIDEST ASIAN LEARNERS ENGLISH SCHOOL

Why **WALES**?

Academic Development

Considered as the “Educational Center of the North”, the teachers are taught with the pedagogy of teaching & human relations. Because of our well-trained enthusiastic and professional language teachers who came from different academe, majority of the students who studied with us leveled up in their English skills, developed confidence in interacting with diverse nationalities and further include competence in the real world.

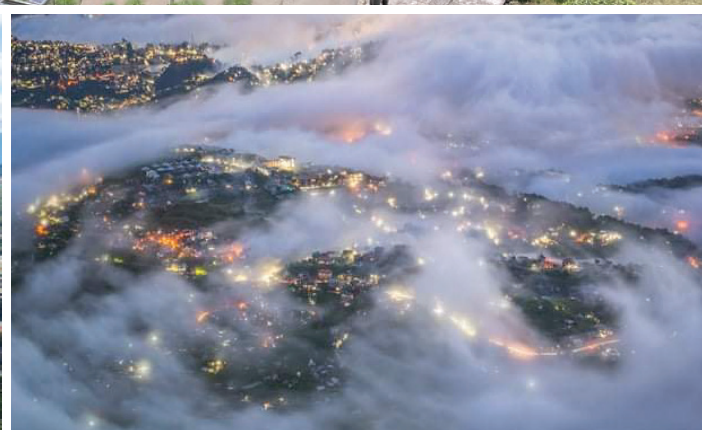
Location

The school is located at the central district of the city where you are just a minute away from restaurants, banks, parks, and supermarkets. Also, it is known as the summer capital of the Philippines due to its cool climate. Moreover, it is considered a safe city. The joint effort and support between the police and the community ensures a safe and peaceful environment.

Experience and Service

We provide a homey atmosphere and care system for the young and the elderly. We assist, guide, and help reserve for transportation, accommodation outside the city and activities. In addition, we also aid learners who need health checkup. We also address complaints in a timely manner.





Program

WALES Leveling System

CEFR	A0	A1	A2	B1	B2		C1	C2	
WALES	Beginner A	Beginner B	Elem A	Elem B	Pre-Inter A	Pre-Inter B	Inter A	Inter B	Advanced
Academic	ESL ACHIEVERS			ESL ACHIEVERS, ESL LITE					
	ESL LITE			Business English					
				Academic IELTS					
				IELTS General Training					
General	EEP								
Junior	Junior ESL Fundamental			Junior ESL Developmental			Junior ESL Intensive		
				Junior IELTS Developing			Junior IELTS Intensive		

Daily Schedule

Time	Subjects	Note
07:00 - 07:45	Breakfast	Breakfast Time 07:00 - 07:45 08:00 - 08:45
08:00 - 08:45	Breakfast /Class	1:1 or Group class
08:55 - 09:40	Class	1:1 or Group class
09:50 - 10:35	Class	1:1 or Group class
10:45 - 11:30	Class	1:1 or Group class
11:40 - 12:25	Lunch / Class	Lunch Time 11:30 - 12:30 12:30 - 13:20
12:35 - 13:20	Class	1:1 or Group class
13:30 - 14:15	Class	1:1 or Group class
14:25 - 15:10	Class	1:1 or Group class
15:20 - 16:05	Class	1:1 or Group class
16:15 - 17:00	Class	1:1 or Group class
17:00 - 17:45	Class	1:1 or Group class
17:30 - 19:00	Dinner	1:1 or Group class
19:00 - 22:00	Self Study	1:1 or Group class



GENERAL PROGRAM

- **General English Program**
Is designed to help students improve their communication skills.
- **General Learning Outcomes**
 - understand and use familiar everyday expressions in English.
 - have learned how to listen for general context and ideas.
 - be able to ask and answer a variety of basic questions.
 - Be able to express themselves confidently in different situations.



 **EEP (English Enhancement Program)**

 **EEP 1 (3 classes: 1 to 1 Classes)**

Speaking 1

Speaking 2

Listening

 **EEP 2 (5 classes: 4 one to one + 1 group class)**

Speaking 1

Speaking 2

Listening

Vocabulary

Interactive Discussion

 **END Term Progress Test**

At the end of the term, students will complete a progress test that measures their improvement.

ACADEMIC PROGRAMS

ESL

This program is designed to enhance learners 4 macro skills for academic purposes.

This program provides examinations to determine students level and progress.



A0		A1		A2		B1		B2		C1		C2	
Beginner A	Beginner B	Beginner BB	Elem A	Elem B	Pre-Inter A	Pre-Inter B	Inter A	Inter B	Advanced				
ESL FUNDAMENTAL						ESL DEVELOPMENTAL				ESL INTENSIVE			

ESL 8 (8 Classes: 5 one to one + 3 Group classes)

ESL FUNDAMENTAL

(1:1 Classes) (Group Classes)

Speaking Writing Reading Grammar Vocabulary Listening Discussion Vowel & Consonants

ESL DEVELOPMENTAL

(1:1 Classes) (Group Classes)

Public Speaking Writing Reading Grammar Vocabulary Listening Stress & Intonation Discussion

ESL INTENSIVE

(1:1 Classes) (Group Classes)

Speaking 1 Speaking 2 Writing Pro Reading Mastery Grammar Pro Listening Accent Training Debate

ESL Lite

ESL Lite is designed for a more flexible class. Students can choose individual and group classes

ESL Lite A (6 Classes: 4 one to one + 2 Group Classes)

(1:1 Classes) (Group Classes)

Speaking Writing Reading Grammar Listening Discussion

ESL Lite B (6 Classes: 3 one to one + 3 Group Classes)

(1:1 Classes) (Group Classes)

Speaking Writing Reading Listening Discussion Pronunciation

BENEFITS of WALES ESL Program

- Build student's foundational skills to advanced level.
- Develop student's communication skills in academic setting.
- Enhancement of student's written skills.
- Students can target a specific TOEIC score.

How can a student target a specific TOEIC score with the ESL Subjects?

- ESL books have the equivalence of a TOEIC-type test as shown in the table below.

SUBJECTS	ESL Listening Listening and Reading skills presented in the class	TOEIC Question Types
Listening	<ul style="list-style-type: none"> • Picture description • Dictation • Note-taking • Conversations • Short talks 	<ul style="list-style-type: none"> • Photographs • Questions and response • Short Conversations • Short talks
Reading	<ul style="list-style-type: none"> • Identifying meaning from the context • Vocabulary and Reading comprehension • Sentence Completion • Making Inferences 	<ul style="list-style-type: none"> • Incomplete Sentences • Text Completion • Reading Comprehension

- Audio is played **ONCE only** to develop their active listening skills whereas TOEIC is also played once.
- Students can change other subjects in ESL courses to focus on their goal. A maximum of 2 Reading and listening classes.

How can you monitor the students' development in TOEIC?

- The ESL Entrance and End Term examinations are TOEIC-type tests. Development is reflected on the End-term exam scores and progress chart.

CEFR		WALES		ESL	TOEIC
PROFICIENT	C2	ADVANCING	Advanced	96-100	901-990
	C1		Upper Inter	91-95	
			Inter	81-90	
INDEPENDENT	B2	DEVELOPMENTAL	Pre-Inter B	71-80	701-900
			Pre-Inter A	61-70	
			Elem B	51-60	
BASIC	A2	FUNDAMENTAL	Elem A	41-50	255-500
	A1		Beg B	31-40	
	A0		Beg A	0-30	

Progress Sheet

Name: YUTAKA YAMASAKI

English Name: TAKA

Arrival: September 9, 2023

Departure: November 3, 2023

LEVEL: Pre-Inter A

CEFR: B2

LEVEL	PROFICIENT	INDEPENDENT	DEVELOPMENTAL	FUNDAMENTAL
C2	Advanced	Upper Inter	Inter	Pre-Inter B
C1	Upper Inter	Inter	Pre-Inter B	Pre-Inter A
B2	Inter	Pre-Inter B	Pre-Inter A	Elem B
B1	Pre-Inter B	Pre-Inter A	Elem B	Elem A
A2	Pre-Inter A	Elem B	Elem A	Beg B
A1	Inter	Elem A	Beg B	Beg A
A0	Pre-Inter B	Pre-Inter A	Elem B	Beg A

Level Description: The student can understand the main ideas of complex text on both concrete and abstract topics, including technical discussions in his/her field of specialization. He/She can interact with a degree of fluency and spontaneity that makes regular interaction with native speakers quite possible without strain for either party. He/She can mostly produce clear, detailed text on a wide range of subjects and explain a viewpoint on a topical issue giving the advantages and disadvantages of various options.

ENTRANCE EXAM REPORT CARD		
Name:	Taka	
Term:	10th	
Date:	11-Sept-23	
Skill	Score	%
Listening	33	7.92
Reading	58	13.92
Writing	40	10
Speaking	50	13.3
TOTAL	45.34	
LEVEL:	Elementary A	

ESL REPORT CARD		
Name:	TAKA	
Term:	10th	
Date:	6 - Oct - 23	
Skill	Score	%
Listening	54	12.96
Reading	71	17.04
Writing	50	12.5
Speaking	65	17.55
TOTAL	60.05	
LEVEL:	Elementary B	

ESL REPORT CARD		
Name:	TAKA	
Term:	11th	
Date:	3 - Nov - 23	
Skill	Score	%
Listening	67	16.68
Reading	79	18.96
Writing	65	16.25
Speaking	66	17.82
TOTAL	69.11	
LEVEL:	Pre-Intermediate A	

Progress Chart

Legend: Listening (Blue), Reading (Orange), Writing (Green), Speaking (Yellow)

Beg A - A0

Widest Asian Learners English School, Inc.

Business English



- **PURPOSE**
 - » This program is designed for students who are employed in business companies who want to support their career advancement, individuals who are in search of employment and learners who want to expand their career prospects
 - » It is centered on language appropriate for its intended purpose and meet the specific needs of the learners to increase their knowledge of key business concepts worldwide.
- **COURSE DESCRIPTION**
 - » This course provides learners with instructions and trainings which focuses on business contexts to allow them to effectively communicate with others whether in correspondence, face to face, meetings or online.
- **LEARNING OUTCOME**
 - » Convey a systematic and complex mode of language
 - » Develop confidence and basic skills to deal with people and basic issues in the business world
 - » Identify differences and similarities between doing business in various countries
 - » Improve communication with colleagues and employers
 - » Increase the chances of landing an international career or boost international careers

BUSINESS ENGLISH (B1/ Elementary B)

(7 Classes: 5 one to one Classes + 2 Group classes)

(1 : 1 Classes)			(Group Classes)			
Business Pitch	Vocabulary Builder	Authentic Listening	BIZ Talk 1	BIZ Talk 2	Article Reading	BIZ Correspondence

WALES is your pathway to your global career, our collaboration with B.H.M.S (Business & Hotel Management School) in Lucerne, Switzerland supports students who are pursuing a career in Hotel & Hospitality Management, Global Business Management and Culinary Arts, WALES Business English Program provides classes that can help students to be globally competitive.



Hospitality Management



Business Management



Culinary Arts

IELTS

This program is designed to prepare students with the essential skills and knowledge needed to attain their desired band score in the IELTS official test.

A specific assessment band score is needed for the IELTS Program.



CEFR	A2	B1	B2	C1	C2
IELTS	3.5 - 4.0	4.5 - 6.5		7.0 and up	
WALES	IELTS Starter	IELTS Developing		IELTS Intensive	
Requirement	Students should have a minimum assessment score of 3.5 to be accepted in the IELTS program.	Students should have an assessment score of 4.5 - 6.5 .		Students should have an assessment score of 7.0 and above .	

IELTS STARTER (3.5-4.0)

(8 Classes: 5 one to one IELTS Classes+ 3 ESL Group classes + Self- monitored Vocabulary workbook)

(1:1 Classes) (Group Classes)

IELTS Speaking

IELTS Writing

IELTS Reading

IELTS Listening

Grammar

ESL Listening

ESL Discussion

ESL Pronunciation

IELTS DEVELOPING (4.5-6.5)

(7 Classes: 5 one to one + 2 Group classes + Self- monitored Vocabulary and Writing workbook)

(1:1 Classes) (Group Classes)

IELTS Speaking

IELTS Listening

IELTS Reading

IELTS Writing 1

IELTS Writing 2

Grammar

Conceptualization

IELTS INTENSIVE (7.0 and Up)

(7 Classes: 5 one to one + 2 Group classes + Self- monitored Writing workbook)

(1:1 Classes) (Group Classes)

IELTS Speaking

IELTS Listening

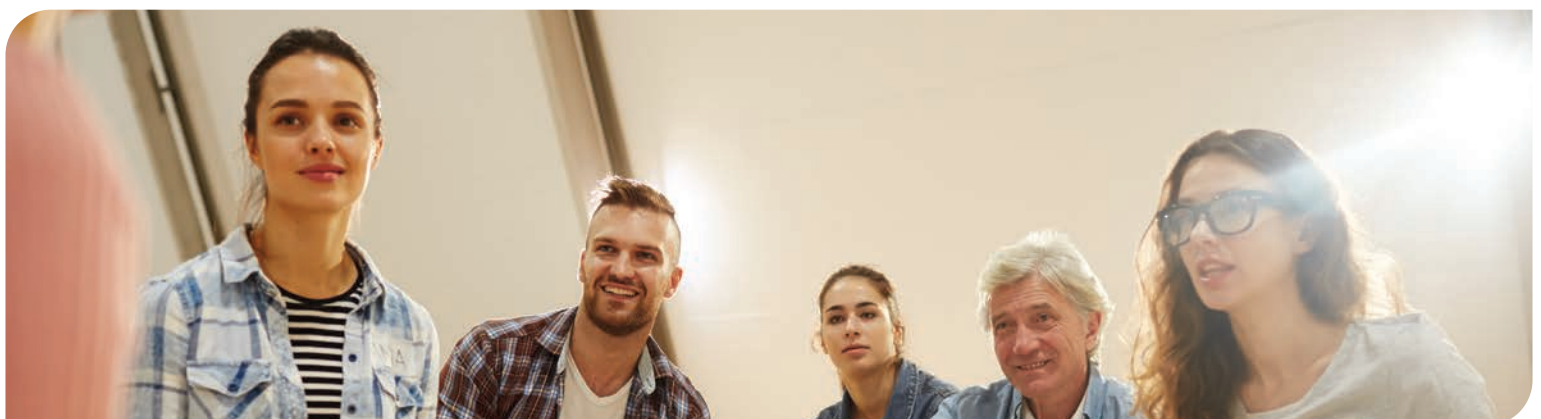
IELTS Reading

IELTS Writing 1

IELTS Writing 2

Grammar

Analysis



JUNIOR ESL & IELTS



A0		A1		A2		B1		B2		C1		C2					
Beginner A		Beginner B		Elem A		Elem B		Pre-Inter A		Pre-Inter B		Inter A		Inter B		Advanced	
Jr. ESL FUNDAMENTAL						Jr. ESL DEVELOPMENTAL						Jr. ESL INTENSIVE					

Junior ESL (7-14 years old)

(8 Classes: 5 one to one + 3 Group classes)

(1:1 Classes)

Speaking 1, Speaking 2, Writing, Reading, Vocabulary, Listening, Grammar, Phonetics

(Group Classes)

Junior IELTS (12-15 years old)

This program is designed to prepare junior students to take the IELTS official test with the essential skills and knowledge they need in order to attain their target band score. It is recommended to study ESL fundamental for students who cannot attain the minimum assessment average band score of 4.5.

CEFR	B1		B2		C1		C2	
IELTS	4.5 - 6.5				7.0 and up			
WALES	IELTS Developing				IELTS Intensive			
Requirement	Students should have an assessment score of 4.5 to 6.5.				Students should have an assessment score of 7.0.			

➤ IELTS DEVELOPING (4.5-6.5)

(7 Classes: 5 one to one + 2 Group classes + Self-monitored Vocabulary and Writing workbook)

(1:1 Classes)

IELTS Speaking, IELTS Listening, IELTS Reading, IELTS Writing 1, IELTS Writing 2, Grammar, Conceptualization

(Group Classes)

➤ IELTS INTENSIVE (7.0 and Up)

(7 Classes: 5 one to one Classes+ 2 Group classes)+Self-monitored Writing workbook)

(1:1 Classes)

IELTS Speaking, IELTS Listening, IELTS Reading, IELTS Writing 1, IELTS Writing 2, Grammar, Analysis

(Group Classes)

MOCK TEST

2 times each term (Middle and end of the term)

Middle and end of the term:

Speaking mock test is on Friday

The mock test for listening, reading, writing is on Saturday

End term:

The mock test for listening, reading, writing is on the last day of the term.

FAMILY Program



Family program is a beneficial and engaging program where parents are encouraged to learn the English language along with their children; enabling them to participate in their children's education and social lives using the English language.

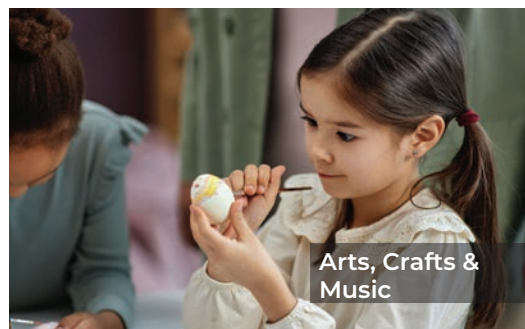
Every Saturdays, the junior students can enjoy variety of fun activities that allow them to experience the local culture which leads to a broader experiences and perspective.

Junior Saturday Activities

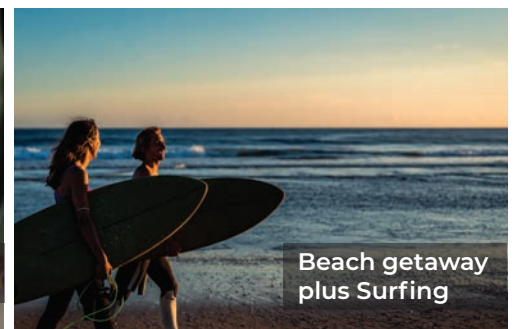
- An educational school excursion is one way where kids learn to experience something new as well as broaden their horizon!



Palm Grove Asin



Arts, Crafts & Music



Beach getaway plus Surfing



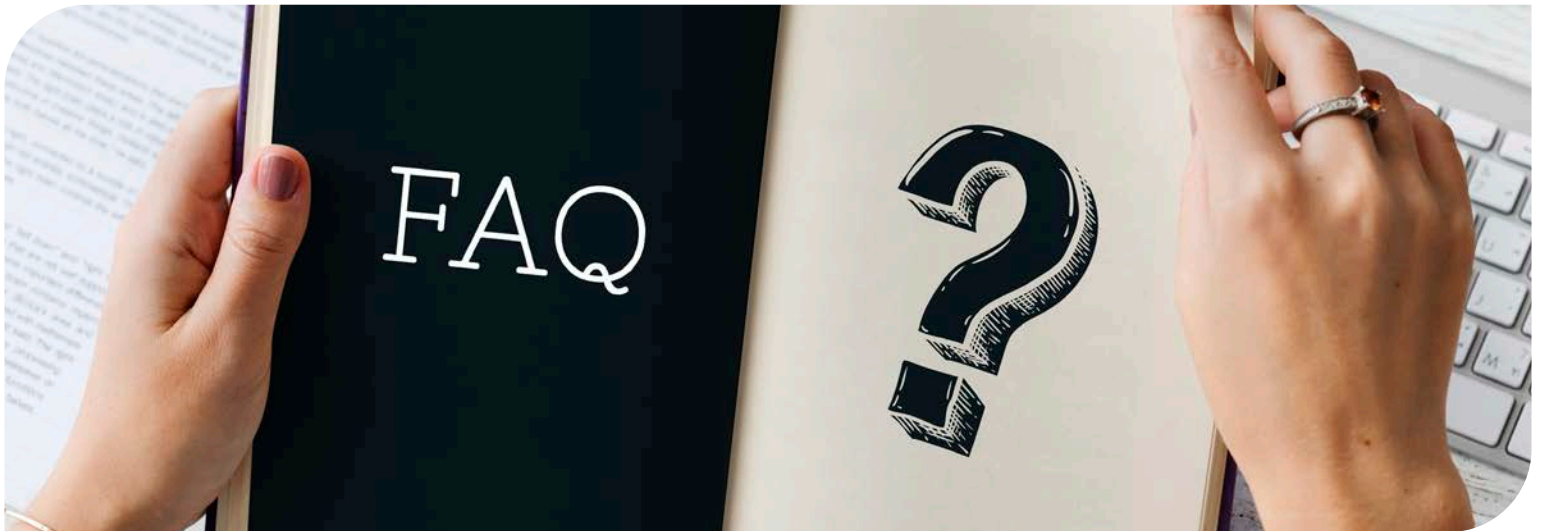
Sport Activities



Camping



Food Preparation



Frequently Asked Questions

Q: Is it possible to provide guardian and nanny service?

A: We do not provide nanny service. Junior students must be accompanied by a parent or a guardian.

Q: Is cooking allowed in the dormitories?

A: Cooking is allowed in dormitories except for studio type. However, cooking materials such pots, frying pans are NOT provided.

Q: Is there a specific type of accommodation for the family?

A: Accommodation depends on the number of family members.

Q: Is it mandatory for parents and guardians to register for classes?

A: Parents and guardians are required to enroll in our programs. Personnels who are NOT enrolled in WALES are restricted to stay in our dormitories.

Q: Can Junior students travel alone for the Family Program?

A: We do not offer Junior Camps or Junior exclusive programs.

Q: What is the Junior Program and at what age can a junior student allowed to travel abroad alone?

A: The Junior program is for students under 15 years of age, and students who are 15 and over 15 years of age can enter and exit the country alone.

Q: Can students under 15 years old apply for the adult Programs?

A: Students under 15 years old can only enroll in Junior programs.

Q: What program is ideal for the parent or guardians?

A: The ideal program for most parents is the English Enhancement Program (EEP).

Q: Can I change subjects and use my own textbooks from my country?

A: Subjects can be changed if the student got a 90% level of proficiency based on WALES assessment exam. Textbooks brought from other countries CANNOT be use in the classes.

Q: Are night classes offered for juniors?

A: No night classes are offered; however, Saturday activities are provided.

Q: Are there activities offered in WALES?

A: During the peak season, the Academy offers activities every Saturday, However, no special activities are provided other than the designated period.

Q: How many activities are provided?

A: Activities depend on the number of weeks the student is enrolled.

Q: Are the Saturday activities fixed?

A: Saturday activities may change depending on the local weather and other circumstances.

Q: Is it mandatory for juniors to join the Saturday activities?

A: Juniors are required to join the activities unless they have a valid reason for their absence.

Q: Who will accompany the students during the activities?

A: School staffs will be the guardians during Saturday activities. If parents have other schedules, they can let their children participate. However, in the case of beach activities, parental participation is required.

GOLF

🏌️ Camp John Hay Golf Course

When accompanied by a member

- Green fees: 2,260 pesos (incl. insurance) on weekday
3,260 pesos (incl. insurance) on weekends
- Cart: 1000 pesos (for 2 people)
- Caddie: 700 pesos

Unaccompanied by a member (guarantee required)

- Green Fee: 3,260 pesos during the week (including insurance)
: 4,260 pesos on weekends (including insurance)
- Cart: 1000 pesos (for 2 people)
- Caddie Fee: 700pesos

🏌️ Pinewood Golf Course

“We will inform you of the cost when you purchased a green fee coupon. Green fee coupon are available at the school.”

- Green fee : 800 pesos
- Cart, Insurance, etc.: 1,400pesos
- Caddie Fee: 600pesos



FACILITY





Business Lounge



Cafeteria



Student Lounge



CLASSROOM





Business Center



Function Hall

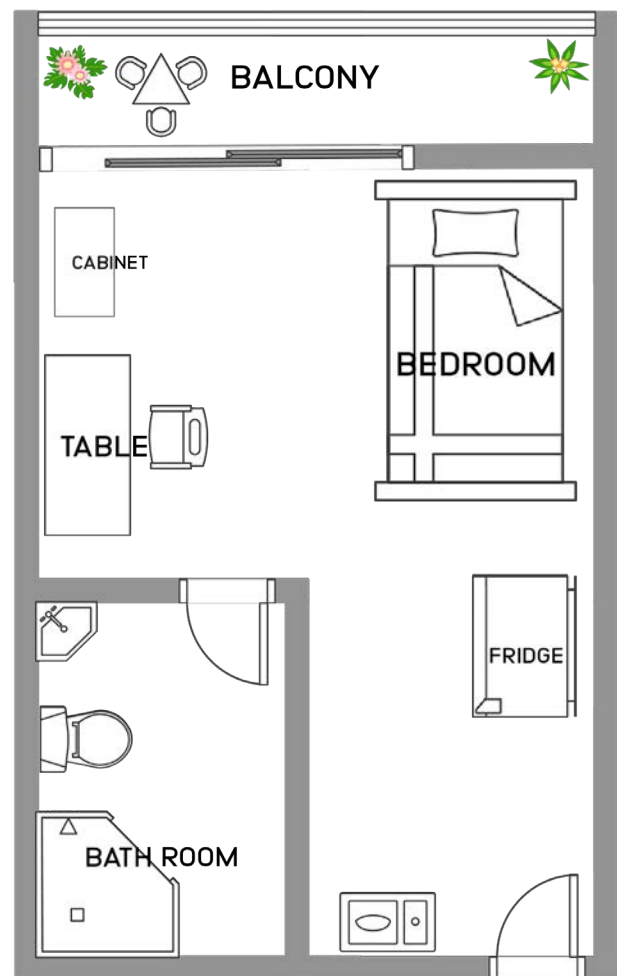
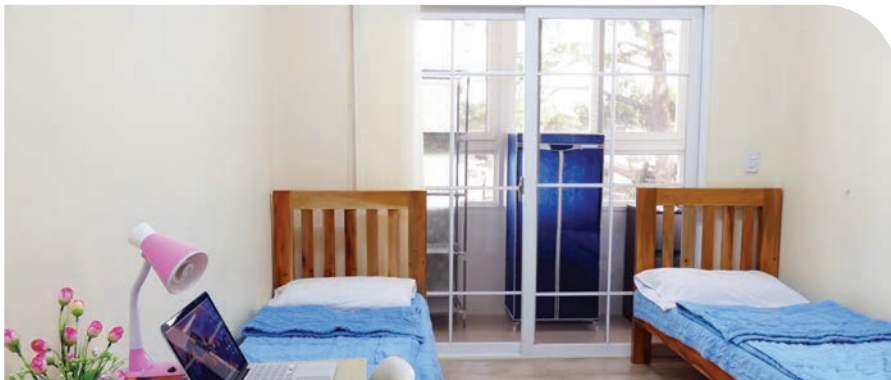


Group Classrooms



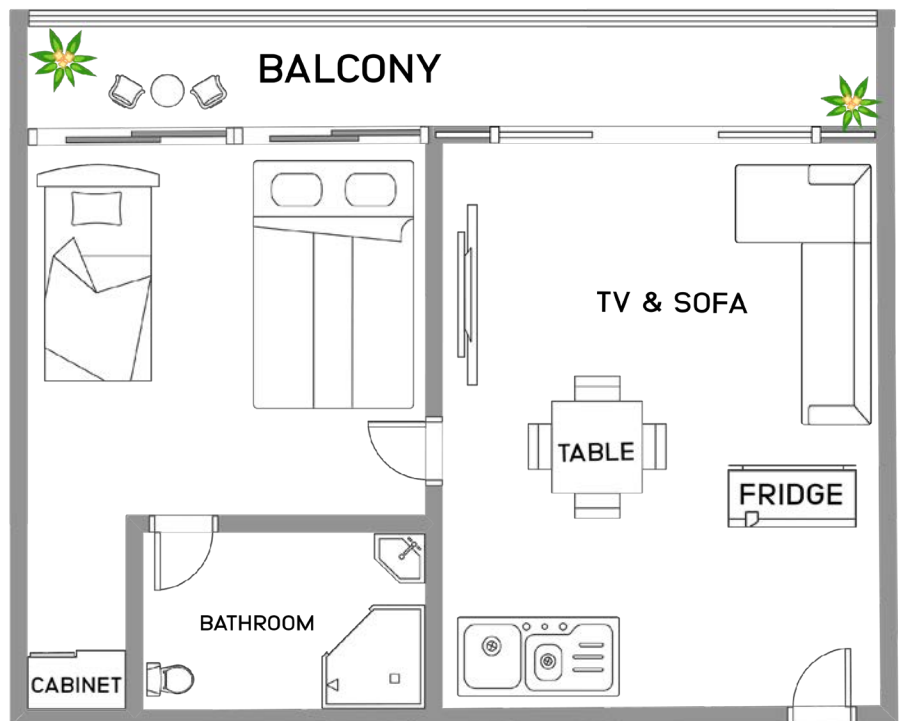
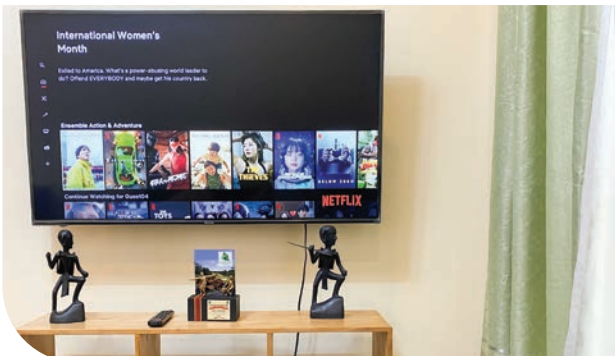
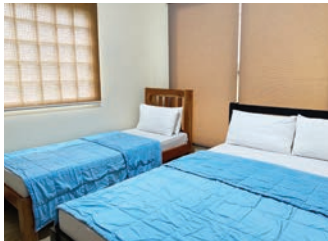
1:1 Classrooms

DORMITORY_STUDIO TYPE



- **Share Type :**
Single or Twin Share
- **Amenities :**
Hair Dryer, Bidet, Electric Kettle, Microwave oven, Induction Cooker, WIFI signal : 60Mbps

DORMITORY_PREMIUM STUDIO TYPE



• Share Type :

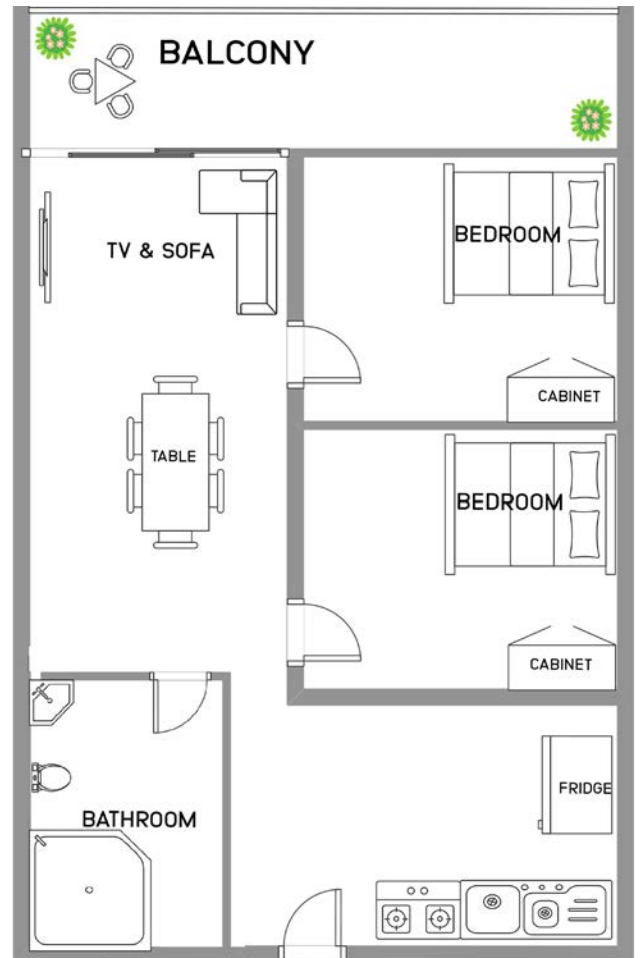
Single, Twin, and Triple Share

• Amenities :

Refrigerator, Electric Kettle, Microwave oven, Induction Cooker, LED TV, Hair Dryer, Bidet,

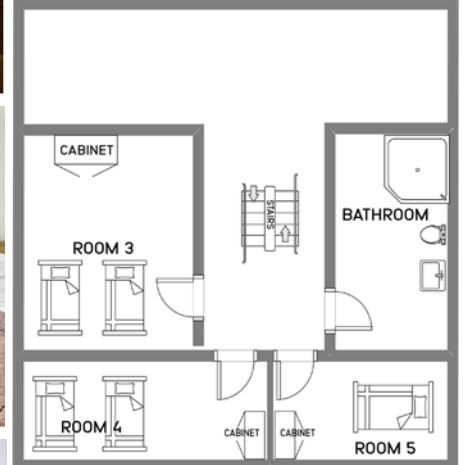
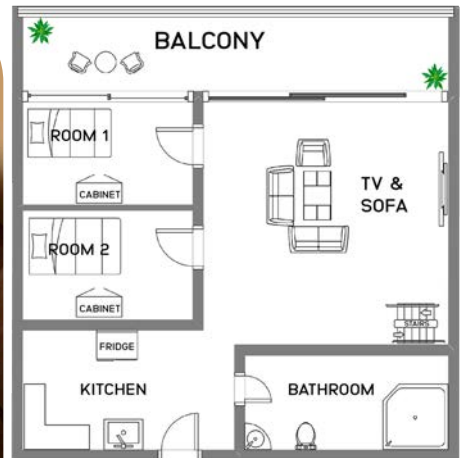
WIFI signal : 60Mbps

DORMITORY_CONDO TYPE



- **Share Type :**
Semi Single, Family (Max 4pax)
- **Amenities :**
Refrigerator, Electric Kettle, Microwave oven, Gas range, LED TV, Hair Dryer, Bidet
WIFI signal : 300Mbps

DORMITORY_SHARED TYPE



- **Share Type :**
Single or Twin Share
- **Amenities :**
Refrigerator, Electric Kettle, Microwave oven, Gas Stove, LED TV, Hair Dryer, Bidet, WIFI signal: 300Mbps

TESTIMONIALS



 **Eden**

This is my second time to study in Baguio City. My previous school is far from the town so I had to take taxi and I can only visit SM every weekends. However, the good thing about WALES is the convenient location. I can visit most places by walking since I like coffee, going to Starbucks is so convenient for me its only 3 minutes' walk from the school campus. There are many nice coffee shops and restaurants near the school area so students can enjoy visiting these places. The public library is also near, and I love to visit this place from time to time. I even tried swimming at the Baguio swimming pool near the athletic bowl.

There are many places that you can enjoy while studying here in WALES. I took the General Program which is called EEP (English Enhancement Program) since I want to improve my communication skills. Before, I couldn't really express myself well but now, I gained confidence to communicate to my teachers and even to the local people. I enjoyed my discussion class because students are from different nationalities. Our teacher encouraged us to express our opinions and gave us equal opportunity to talk in the class. In my speaking classes, my teachers always checked my grammar and pronunciation mistakes which is important and helpful for a clear communication.

Jayson

I am a professor in a university in Taiwan. My purpose in coming here to study is to improve my speaking and listening skills.

I took the EEP2 (English Enhancement Program) course because this program focuses more on the communication skills which is the same as my purpose. This program offers five subjects with two speaking classes, listening, vocabulary and one group discussion. I found the book contents essential and practical.

I like Baguio City because of the weather. I can enjoy fresh air and studying is more comfortable too. WALES location is perfect because it is located near downtown so shopping for my daily basic needs is very convenient. I like it here.



Tora

I worked as a pharmacist in Japan, but I wanted to find new possibilities and came to Baguio, to study with the goal of obtaining a good IELTS score. I chose to study abroad in Baguio because I heard that Baguio is an area where I can concentrate on my studies due to its climate and safety. I chose WALES because it had a relatively large number of working adults, so I expected there to be less temptation to hang out. In fact, I was able to devote most of my stay to self-study.

I studied at my own pace, practiced my hobby of dancing at a nearby park, and occasionally went out with my roommate. All of my IELTS instructors were very good, understanding my weaknesses, and always thinking about how I could improve my score. Also, when I was discouraged, they kindly and cheerfully encouraged me, which I think helped me a lot mentally. Thank you for helping me reach my target score.



TESTIMONIALS

[IELTS] Improved writing skill 4.5~6.0 within 4 months / GRACE

Since WALES is in the city center, it is easy for me to have access to my basic needs like the grocery store, restaurants, fast-food chains and the public market. For my daily exercise, I can just walk to Burnham Park and to the nearby gym which is 3 minutes away from the school. I have never gotten tired of living here in WALES even though I stayed here for almost a year. Also because of the convenient location, I was able to practice my English communication skills especially when I go out and order my coffee to the nearby coffee shops and when I buy groceries and fresh fruits in the public market. I took three different programs. First, I studied ESL. At that time, I noticed that I lack basic vocabulary, for example the name of the body parts, basic terms related to the environment. I often use these words in Japanese so I think I can improve my English skills from my daily activities. In my ESL classes, I am not only learning the English language but I also gained knowledge from variety of topics that we discussed. I also took the Business English Program, and I liked this program the most. I was able to acquire Business English terms and phrases useful for working abroad since I am planning to work in a western country. I also learned how to write standard resume, formal and informal business letters and I was able to learn how to review and make a simple business agreement. Lastly, I took the IELTS program. I learned techniques and strategies how to obtain a higher band score. In my writing class. I was taught how to paraphrase, and I learned vocabulary related to IELTS topics. Moreover, I was able to get ideas for my writing task 2 from my classmates in my group discussion class. I learned these necessary skills and it helped me improve my score. My writing mock test score is 4.5 and after learning helpful writing tips, I was able to get a 6.0 in my official IELTS writing. I can say that I owe my improvement from my IELTS classes.



They serve a well-balanced diet three times a day. On weekdays, they serve Japanese, Korean and Chinese food. I was surprised when I ate oyako-don because the taste was very authentic. I am satisfied with our meals.

There is housekeeping assign to clean our rooms twice a week. Aside from the rooms, other facilities are clean and tidy so students can focus on their studies. I do appreciate the housekeeping too.

[IELTS] Improved writing skill 1.5~6.5 within 2 months / KELSEY



My name is Kelsey, and I'm from Taiwan. I studied IELTS program for about 3 months here in WALES. I like my IELTS teachers because they really helped me improve my English a lot.

Before I came here, I made many grammatical mistakes. My speaking teacher always corrected me and gave me useful advice. I remember my score in my first mock writing exam was only 3.5, but now I was able to get 6.5. Aside from the classes, the dorm is very clean, and there are housekeepers who come to clean, twice a week. I would definitely recommend students to study here.

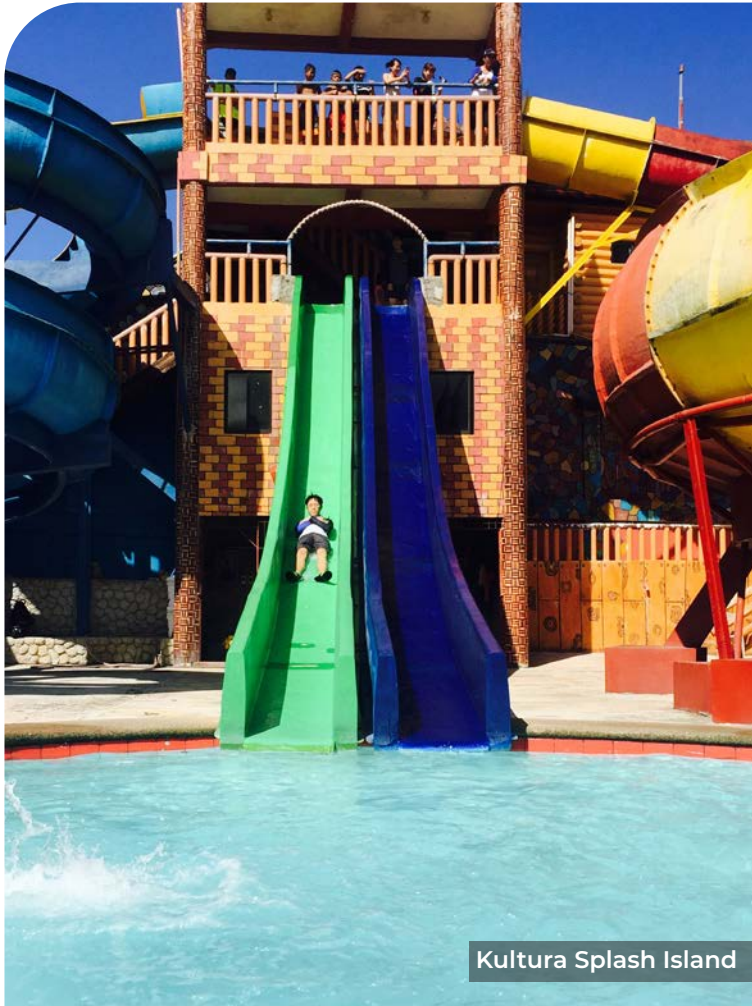
The location is near the town, so it is convenient in comparison with other schools. Students here don't have to worry about safety, since there are security guards. Last but not the least, the weather in

Baguio is comfortable to people who are not used to hot weather.

Results	
Listening	8.0
Reading	8.0
Writing	6.5
Speaking	6.5
Your overall band	7.5



ACTIVITIES



Kultura Splash Island



ASIN Hot Spring



Mt. Kalugong



Vigan



Vigan



Ambuklao Dam



San Juan



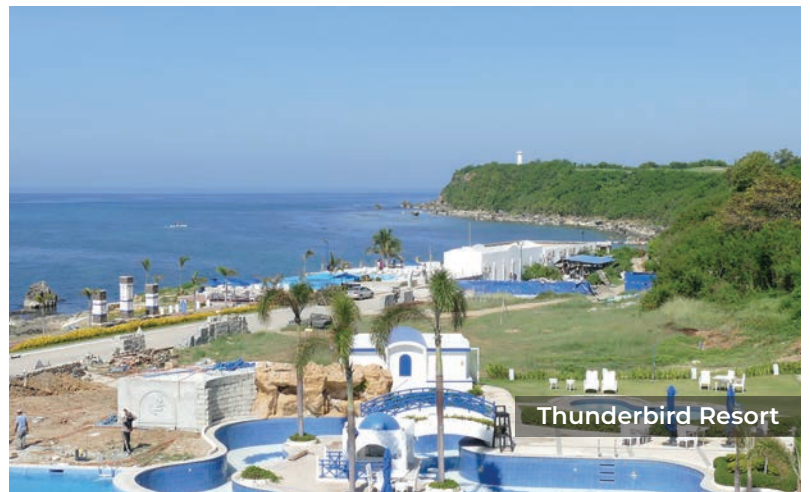
San Juan



San Juan



Hundred Islands



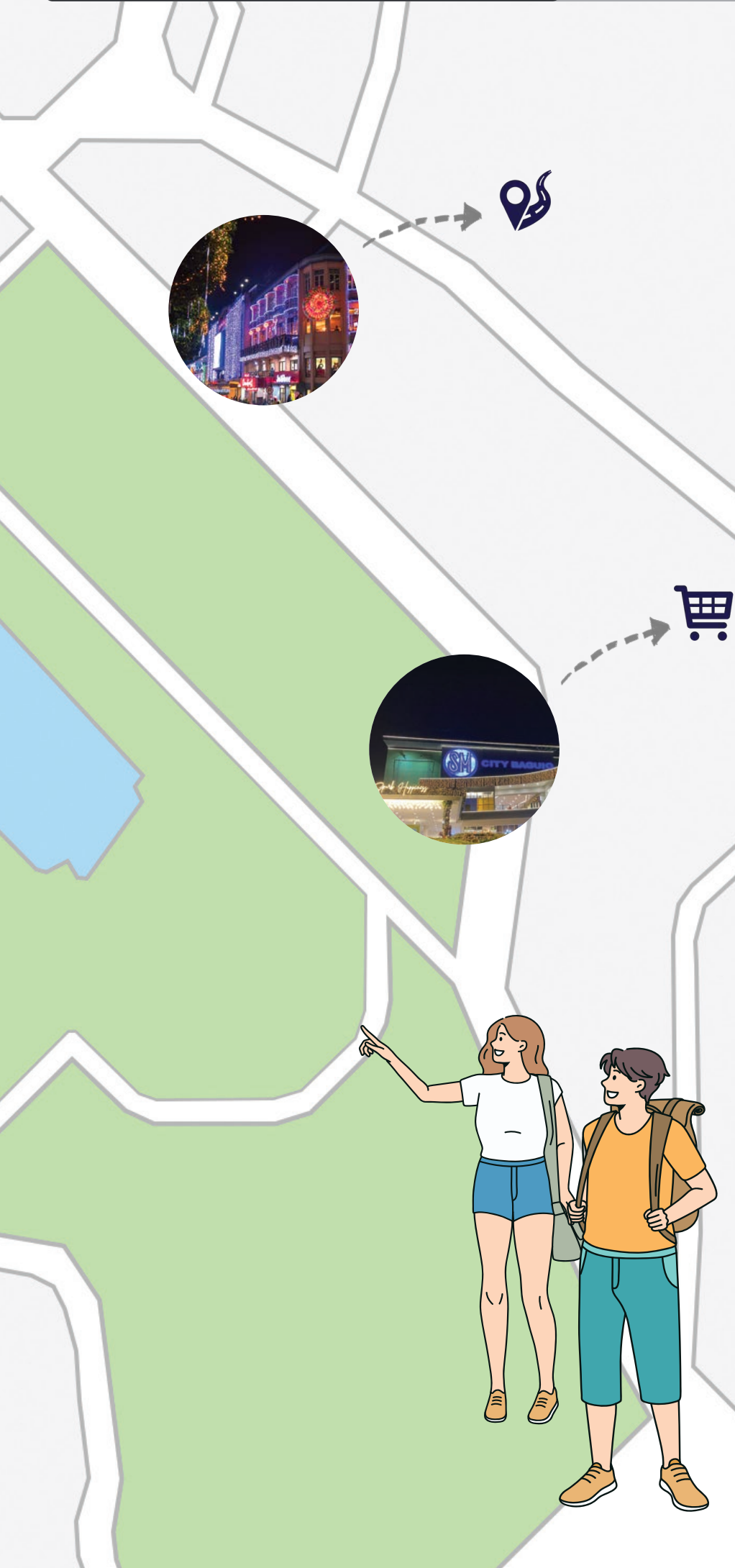
Thunderbird Resort



Palm Grove Asin

CONVENIENT LOCATION





WALKING DISTANCE



GYM / ALTITUDE

Students can focus more on their studies after a relaxing exercise. 3 - 4 minutes walk.



BANK / ATM

Students do not have to take a taxi to withdraw your money. 2 minutes walk.



SEVEN-ELEVEN

Students can buy groceries any-time. There are also few grocery stores nearby. 1 - 2 minutes walk.



STARBUCKS

Students can always have a cup of their favorite coffee. 3 - 4 minutes walk.



BURNHAM PARK

Burnham Park is the central park in Baguio Students can enjoy outdoor exercises. 4 - 5 minutes walk.



PHARMACY

Tissue, shampoo and so on. Not only medicine can be bought right away. 2 minutes walk.



McDONALDS

Feel the joy of mouthwatering food. 5 - 6 minutes walk.



SM SHOPPING MALL

Shopping, eating out and hanging out with your friends whenever you want. 10 - 15 minutes walk.



PUBLIC MARKET

You can buy fresh vegetables and fruits at a cheaper price. 10 minutes walk.



RESTAURANT

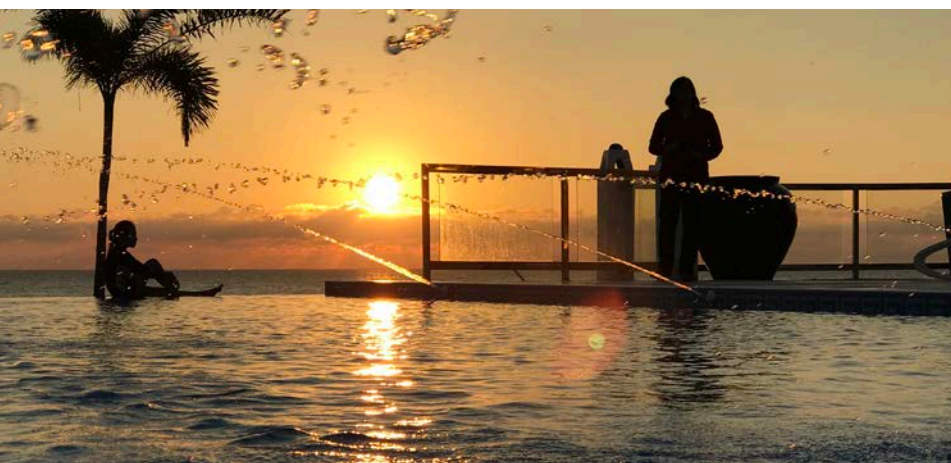
Western and Asian Restaurants are located around the school. 4 - 7 minutes walk.



NAGOMI SPA

Everybody Needs Some time To Relax, Refresh, Rejuvenate and Re-charge 7 minutes walk.





Refund Policy Information

BEFORE DEPARTURE:

- A. The student could avail full refund (100%) of his/her tuition fee if he cancelled four (4) weeks before his/her departure.
 - B. If the student cancels two (2) weeks before the pick-up date, eighty percent (80%) of the tuition fee (tuition + dormitory fee - promotion) will be refunded
 - C. If the student cancels within two (2) weeks of pick-up date, eighty percent (80%) of the remaining period will be refunded. (excluding the two-week tuition fee and two-week dormitory).
*80 % of the remaining weeks - promotion = refund.
 - D. If the student cancels after pick-up date, fifty percent (50%) of the remaining period will be refunded excluding 4 weeks.
 - E. Change of flight:
 - E.1 Flight changed 14 days before the departure will not incur penalty.
 - E.2 Flight changed 7 days before the departure will incur the following penalties.
 - E.2.1. \$200 during the peak seasons
(Peak seasons: 3rd week of June - 3rd week of August; January to February)
 - E.2.2. \$100 during the lean seasons
- EXEMPTIONS:**
- A. Death of immediate family
 - B. Serious medical condition (surgery/ disabling or crippling diseases)

NOTE:

Registration fee is not refundable.

- Students who enrolled for 4 weeks or less cannot get any refund.
- Students who has 4 weeks remaining period cannot get any refund.

UPON ARRIVAL

- A. Students who enrolled 4 weeks and availed promotion cannot get any refund. Also, students who are expelled due to violation of school's policy.
- B. Students who has less than 4 weeks remaining period cannot get any refund.
- C. Students who got any discounts applied upon admission will be deducted from the refund.
- D. In cases of fortuitous events and Acts of God. No refund shall be given in the event of school closure or suspension. However, long term students can be given credit like returning/transfer credit.

NOTE:

1. 4 weeks is automatically forfeited, and refund shall vary depending on the date/week of cancellation and remaining weeks shall be refunded.
2. All refunds shall be refunded by the agency to the student. Not the school directly.
 - EXPLANATION:
 - A. Students who are enrolled for 8 weeks and cancelled within the 4 weeks period he/she can get a refund of 50%. After that no refund shall be given.
 - B. Students who are enrolled for 12 weeks and cancels within the 4 weeks period can get 50% refund of the remaining weeks. However, if he/she cancels on the 5th - 8th week of his/her term. He/ She can get a refund of 25% but if he/she cancels on the 9th week, no refund shall be given. These applies on the succeeding duration and period of cancellation.

OTHER SITUATION:

- For inevitable cases like death of immediate family and any medical condition that requires immediate attention such as surgery, disabling or crippling diseases / allergies, and those that are not covered by medical services in the Philippines (with medical certificate), the student can choose from the following options:
- The remaining weeks on the current term will be forfeited but fifty percent (50%) of the tuition fee and dormitory fee of the remaining enrolled weeks will be refunded. Same condition applies to miscellaneous fees.
- The school will put the student's slot on hold up to 4 weeks and after resolving the issue, the student can return and continue to study. However, changes may arise depending on the availability of rooms.

NON-REFUNDABLE:

- ▶ Minor allergies/sickness.
- ▶ Inability to cope with existing environment
- ▶ Mental health
- ▶ Who availed promotion
- ▶ Kicked out

REFUND PROCESS

- ▶ Once you have the details of the refund, fill out the refund application form and process within one (1) month of receipt.
- ▶ The discount given during promotion will be deducted from the computation of refund.
- ▶ Fees that may be incurred for the bank remittances due to overseas fees shall be deducted from the sender/student and not the school/receiver.
- ▶ Our refund policy for the miscellaneous fee requires three working days processing time.



WALES BAGUIO

2024 CALENDAR



JANUARY

SUN	MON	TUE	WED	THU	FRI	SAT
	1	2	3	4	5	6
7	8	9	10	11	12	13
14	15	16	17	18	19	20
21	22	23	24	25	26	27
28	29	30	31			

Jan 01 - New Year's Day
 Jan 02 - 1st TERM
 Jan 26 - End-TERM
 Jan 29 - 2nd TERM

FEBRUARY

SUN	MON	TUE	WED	THU	FRI	SAT
				1	2	3
4	5	6	7	8	9	10
11	12	13	14	15	16	17
18	19	20	21	22	23	24
25	26	27	28	29		

Feb 10 - Chinese New Year
 Feb 23 - End-TERM
 Feb 26 - 3rd TERM

MARCH

SUN	MON	TUE	WED	THU	FRI	SAT
					1	2
3	4	5	6	7	8	9
10	11	12	13	14	15	16
17	18	19	20	21	22	23
24	25	26	27	28	29	30

31
 Mar 22 - End - TERM
 Mar 25 - 4th TERM
 Mar 28 - Maundy Thursday
 Mar 29 - Good Friday
 Mar 30 - Black Saturday

APRIL

SUN	MON	TUE	WED	THU	FRI	SAT
	1	2	3	4	5	6
7	8	9	10	11	12	13
14	15	16	17	18	19	20
21	22	23	24	25	26	27
28	29	30				

Apr 06 - MAKE UP CLASS
 Apr 13 - MAKE UP CLASS
 Apr 09 - Day of Valor
 Apr 10 - Eid al-Fitr
 Apr 19 - End - TERM
 Apr 22 - 5th TERM

MAY

SUN	MON	TUE	WED	THU	FRI	SAT
		1	2	3	4	
5	6	7	8	9	10	11
12	13	14	15	16	17	18
19	20	21	22	23	24	25
26	27	28	29	30	31	

May 01 - Labor Day
 May 17 - End-TERM
 May 20 - 6th TERM

JUNE

SUN	MON	TUE	WED	THU	FRI	SAT
						1
2	3	4	5	6	7	8
9	10	11	12	13	14	15
16	17	18	19	20	21	22
23	24	25	26	27	28	29

30
 Jun 12 - Independence Day
 Jun 14 - End - TERM
 Jun 17 - Eid al-Adha
 Jun 18 - 7th TERM

JULY

SUN	MON	TUE	WED	THU	FRI	SAT
	1	2	3	4	5	6
7	8	9	10	11	12	13
14	15	16	17	18	19	20
21	22	23	24	25	26	27
28	29	30	31			

31
 Jul 12 - End - TERM
 Jul 15 - 8th TERM

AUGUST

SUN	MON	TUE	WED	THU	FRI	SAT
					1	2
4	5	6	7	8	9	10
11	12	13	14	15	16	17
18	19	20	21	22	23	24
25	26	27	28	29	30	31

Aug 09 - End - TERM
 Aug 12 - 9th TERM
 Aug 21 - Ninoy Aquino Day
 Aug 26 - National Heroes Day

SEPTEMBER

SUN	MON	TUE	WED	THU	FRI	SAT
1	2	3	4	5	6	7
8	9	10	11	12	13	14
15	16	17	18	19	20	21
22	23	24	25	26	27	28
29	30					

Sep 06 - End - TERM
 Sep 09 - 10th TERM
 Sep 13 - SIPAT

OCTOBER

SUN	MON	TUE	WED	THU	FRI	SAT
				1	2	3
4	5	6	7	8	9	10
11	12	13	14	15	16	17
18	19	20	21	22	23	24
25	26	27	28	29	30	31

Oct 04 - End-TERM
 Oct 07 - 11th TERM
 Oct 31 - End-TERM

NOVEMBER

SUN	MON	TUE	WED	THU	FRI	SAT
					1	2
3	4	5	6	7	8	9
10	11	12	13	14	15	16
17	18	19	20	21	22	23
24	25	26	27	28	29	30

Nov 01 - All Saint's Day
 Nov 02 - All Soul's Day
 Nov 04 - 12th TERM
 Nov 28 - End - TERM
 Nov 30 - Bonifacio Day

DECEMBER

SUN	MON	TUE	WED	THU	FRI	SAT
1	2	3	4	5	6	7
8	9	10	11	12	13	14
15	16	17	18	19	20	21
22	23	24	25	26	27	28
29	30	31	1	2	3	4

Dec 02 - 13th TERM
 Dec 07 - MAKE UP CLASS
 Dec 14 - MAKE UP CLASS
 Dec 21 - MAKE UP CLASS
 Dec 24 - Additional Non-Working
 Dec 25 - Christmas Day
 Dec 27 - End-TERM
 Dec 30 - Rizal Day
 Dec 31 - Last Day of the Year

Jan 01, 2025 - New Year
 Jan 02, 2025 - (No Classes)
 Jan 03, 2025 - (No Classes)
 Jan 06, 2025 - 1st TERM

School Policy:

There would be a week academic holiday (no classes) on December 30, 2024 – January 3, 2025.
 The 1st Term (January 6 – 24, 2025) would be 3 weeks (15 days) only. As for the school policy, the school provides 18 days minimum study days in a term. If it is less than the minimum, the school will provide make-up classes to complete the term. For the students who are enrolled until January 24, 2025 and will be affected by this, the school will provide make up classes for them on December 7, 14 and 21, 2024.

Note:

We do not allow incoming students starting December 15, 2024 to January 04, 2025. All new enrollees will be accepted on January 05, 2025.

Legend:

- Pick-up
- New TERM & End TERM
- Make up Class
- Holidays (No Classes)

Address _ WALES, B4 The Zone Vill Condominum,
#4 Bukaneg st., Baguio City, Phillipines 2600
Email _ walesph@gmail.com



"There is no end to education. It is not that you read a book, pass an examination, and finish with education. The whole of life, from the moment you are born to the moment you die, is a process of learning." — Jiddu Krishnamurt